


Panasonic


KV-S2025C 

KV-S2045C 



		KV-S2025C		KV-S2045C	
Scanning face		Duplex			
Scanning method		CIS (Contact-type color image sensor) Front and Back sides Background: Black sensor roller			
Scanning speed*1 Letter size portrait <small>Paper feed test by service utility</small>	Binary 200 dpi	Simplex 24 pages/min. Duplex 42 images/min.	Simplex 43 pages/min. Duplex 76 images/min.		
	color 150 dpi	Simplex 10 pages/min. Duplex 18 images/min.	Simplex 19 pages/min. Duplex 34 images/min.		
Resolution		100-600 dpi (10 dpi step) Optical: 600 dpi (Main and Sub scanning directions)			
Output		Binary mode, Gray Scale mode (4/8 bit), 24 bit color			
Binary Mode Halftone		Dither, Error diffusion			
Image control		Image emphasis (5 steps), Gamma correction, *Dynamic Threshold, *Automatic Separation, *Noise Reduction, *De-skew, *Cropping, *Mirror Image, *Mono-chrome Reversing, *Note: Executed by driver software or RTIV™.			
Other function		Patch code detection (Kodak patch 2, 3, T) Note: 1 patch per side. Executed only by ISIS® driver.			
Paper	Size	2.0 x 2.8 in. (50.8 x 70 mm) to 8.5 x 14 in. (216 x 356 mm) Up to 8.5 x 25 in. (216 x 635 mm) *2			
	Thickness	Single paper feeding: 2.0 to 5.9 mils (0.05 to 0.15 mm) Continuous paper feeding: 2.36 to 5.9 mils (0.06 to 0.15 mm) Note: 1 mil = 1/1000 in.			
	Weight	Single paper feeding: 10.7 to 33.9 lbs. (40 to 127 g/m²) Continuous paper feeding: 13.3 to 33.9 lbs. (50 to 127 g/m²) Note: 1 lbs = 3.75 g/m²			
Interface (Transfer rate)		SCSI III (20 MB/sec.), 50 pin			
Feed tray capacity		120 sheets [17 lbs. (64 g/m²)], 100 sheets [20 lbs. (75 g/m²)]			
Unit	External dimensions (Width x Depth x Height)	13.5 x 19.2 x 10.6 in. (343 x 487 x 269 mm) Note: When tray is pulled		13.5 x 19.2 x 9.4 in. (343 x 487 x 239 mm) Note: When tray is installed	
	Weight	18.5 lbs. (8.4 kg)		20.1 lbs. (9.1 kg)	
	Power requirement	AC100 - 120 V, 50/60 Hz	AC220 - 240 V, 50/60 Hz	AC100 - 120 V, 50/60 Hz	AC220 - 240 V, 50/60 Hz
Power consumption	Maximum (Scanning)	36 W	38 W	50 W	50 W
	Minimum (Standby)	16 W	19 W	18 W	19 W
	Sleep mode	5 W	7 W	6 W	8 W
Environment	Operating temperature and humidity	Temperature: 59 °F to 86 °F (15 °C to 30 °C) Humidity: 30 % to 80 % RH			
	Storage temperature and humidity	Temperature: 32 °F to 95 °F (0 °C to 35 °C) Humidity: 10 % to 80 % RH			
Accessories		<ul style="list-style-type: none"> •Power cord, •Roller cleaning paper, •CD-ROM(s) (Maintenance, Safety and Installation manual, Operating Instructions, RTIV™ Capture software, ISIS® driver, TWAIN driver, PIE manual, RTIV™ manual, User utility software, User utility manual), •Printed documents (Maintenance, Safety and Installation manual) 			
Consumables * Options		PaperPort SE <ul style="list-style-type: none"> •Roller exchange kit (KV-SS022) •Roller cleaning paper (KV-SS03) White roller kit (KV-SS023) 		<ul style="list-style-type: none"> •Roller exchange kit (KV-SS022) •Roller cleaning paper (KV-SS03) •Ink cartridge (KV-SS021) White roller kit (KV-SS023) Pre-imprinter (KV-SS020) 	

Note *1: The scanning speed depends on the test environment. The scanning speed differs depending on the host computer operating environment or application.
*2: Paper lengths larger than legal size are supported up to 25 inches. A resolution of less than 300 dpi and single sheet feeding is recommended.

KV-SS905C 
High Speed-Color Scanner
For High Speed production color processing, the 98 ppm KV-SS905C color scanner is the natural choice.

Panasonic

Design and Specifications are subject to change without notice. KME0802A/US-S2025CMLC-01 Printed in Japan

Panasonic

Color Document Scanners

KV-S2025C 
KV-S2045C 



KV-S2045C

KV-S2025C

- ▶ Full Color Duplex Scanning
- ▶ Panasonic Image Enhancement Technology with Color
- ▶ Automatic Cropping and De-skew
- ▶ Dynamic Threshold Technology
- ▶ RTIV™ Image Capture Utility

RTIV Reliable
Throughput
Imaging
Viewer
For KV-S2025C/S2045C



As an Energy Star® Partner, Panasonic has determined that this product meets the Energy Star® guidelines for energy efficiency.
Energy Star® and the Energy Star® certification mark are registered US marks.
RTIV™ is a trade mark of Matsushita Electric Industrial Co., Ltd.
ISIS® and ISIS-Certified™ are trademarks of Pixel translations, a division of Action Point, Inc.
PaperPort® is a registered trademark of ScanSoft, Inc.
All product names are trademarks or registered trademarks of their respective holders. These products may be subject to export control regulations.
Panasonic Digital Imaging Solutions Company
Business Unit of Matsushita Electric Corporation of America
Two Panasonic Way, #7D-8 Secaucus, NJ 07094
For Your Nearest Dealer/Distributor please call 1-800-742-8086
WWW.panasonic.com/scanners



The Reliable choice for Desktop Workgroup and Departmental Document Management Solutions.

The KV-S2025C WorkGroup color scanner and the KV-S2045C Departmental color scanner provide you superior durability with advanced image processing, all at a compact size and price.

Both of these scanners are revolutionary in design, with superb paper handling and a small footprint, making them an ideal desktop solution for file management and critical image processing applications.

- 43 ppm / 76 ipm
- 3M Life 4,000 Duty cycle
- Automatic Cropping
- De-Skewing
- Color Drop Out
- Dynamic Threshold Technology

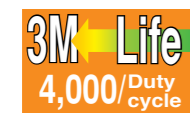


KV-S2045C

KV-S2025C

Shown with the paper tray pulled out.

High Durability and Reliable Paper Handling.



The KV-S2025C and the KV-S2045C have undergone stringent testing, including a three million-page test that both units exceeded, placing them in the upper classification in their respective categories.

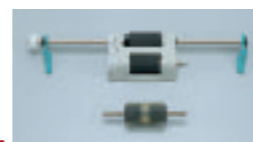
Both the KV-S2025C and the KV-S2045C have feeding rollers providing reliable processing of irregular paper sizes and weights from 10.7 lbs to 33.9 lbs and support of non-carbon paper.

Easy Maintenance.



The clamshell design allows for quick and easy access to the consumables.

End User Roller Replacement.

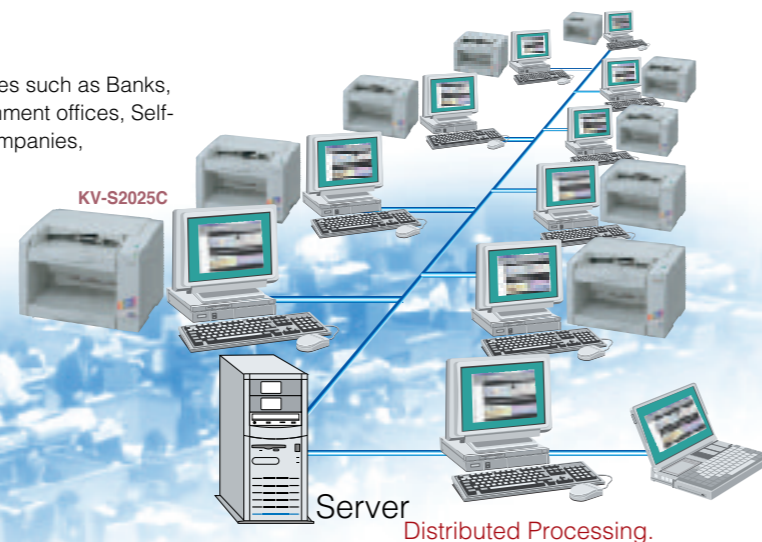


Application Environment.

The scanners are suitable for various types of industries and businesses such as Banks, Securities, Telephone companies, Communication companies, Government offices, Self-governing bodies, Hospitals, Insurance companies, Manufacturing companies, Transportation companies, and so on.

Suitable for the following environments.

- Distributed Processing.
- Desktop Scan Station.
- Workgroup Process Station.
- Departmental Process Station.

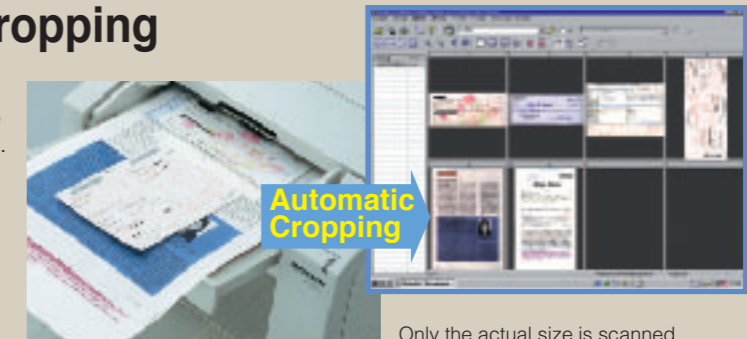


Server Distributed Processing.



Color Automatic Cropping

Documents of various sizes can be scanned in one batch without having to configure individual paper size settings. Now available in color, Automatic Cropping technology captures only the size of the document and not excess image data. This will also help eliminate unnecessary file size.



Only the actual size is scanned.



Color Automatic De-Skew

Imperfect originals when scanned through the automatic document feeder may become skewed. Automatic De-Skew technology corrects the skewed data.

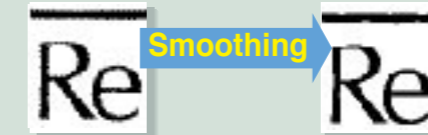


De-Skewing

With skew removed, the document is in the correct position.

In some cases the degree of skew may be too great for the automatic De-Skew to work correctly and may result in distorted characters or lines.

Smoothing

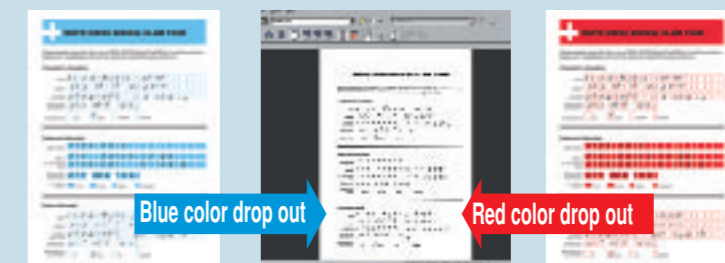


Traditional de-skew software may produce jagged edges, but Panasonic's Smoothing function makes characters' edges remain smooth and precise even after de-skew.



Color Drop Out

Red, Green, and Blue colors can be dropped out to allow the scanned images and data to be presented more clearly for use in OCR and other data capture applications.



Blue color drop out

Red color drop out



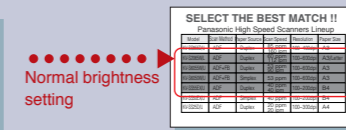
Dynamic Threshold

Data contained on documents with backgrounds of various colors and densities is difficult to capture. Dynamic Threshold technology automatically detects these background concerns and selects the correct image enhancement settings to allow for the best possibility of capturing the data.

SELECT THE BEST MATCH !!
Panasonic High Speed Scanners Lineup

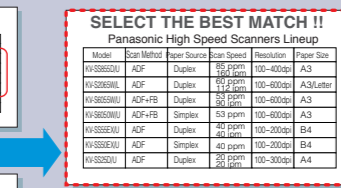
Model	Scan Method	Page Source	Scan Speed	Resolution	Paper Size
KV-S8520U	ADF	Duplex	85 ppm / 160 ipm	100-400dpi	A3
KV-S2025C	ADF	Duplex	60 ppm / 117 ipm	100-600dpi	A3/Letter
KV-S2045C	ADF+FB	Duplex	53 ppm / 90 ipm	100-600dpi	A3
KV-S2025U	ADF+FB	Simplex	53 ppm / 90 ipm	100-600dpi	A3
KV-S2045U	ADF	Duplex	40 ppm / 80 ipm	100-300dpi	B4
KV-S2025U	ADF	Simplex	40 ppm / 80 ipm	100-300dpi	B4
KV-S2045U	ADF	Duplex	20 ppm / 39 ipm	100-300dpi	A4

Sample Material



Dynamic Threshold

Scanning on much brighter setting



Adjust the brightness to suit the colored area

The Dynamic Threshold technology automatically adjusts for every background color creating the most suitable settings. Results may vary depending on the background and quality of the documents.