

*ScanSnap*

*ScanSnap iX100*

**The incredibly fast  
completely wireless  
battery powered  
mobile scanner.**

*ScanSnap*

shaping tomorrow with you

FUJITSU

ScanSnap



iOS



iX100, the world's fastest battery powered ScanSnap. Scan a color document in **5.2 seconds.\***



### Lightweight

Only 400g (14.1 oz.)

### Power on the Move

Rechargeable Lithium Battery.

### Wi-Fi and USB Connectivity

Scan wirelessly to your PC, Mac and mobile devices.

*\*Single-side color A4 document scanned at 300 dpi.*

### Wireless scanning anywhere, anytime

The ScanSnap iX100 can automatically detect your Wi-Fi network at home, in the office or on the go. With *Direct Connect* mode you can scan wirelessly beyond your network.

At home

At the office

On the road



### Built-in GI microprocessor

A dual-core CPU-mounted "GI" processor performs the intelligent image enhancement responsible for great looking images with dramatically faster results and more sophisticated connectivity:

- Image processing: Automatic corrections and image output
- Supports Wi-Fi: 2.4GHz, WPS (Wi-Fi Protected Setup), Wireless LAN (IEEE802.11b/g/n)



### Intelligent automated features

Like all ScanSnap scanners the iX100 features a powerful set of automated image processing functions including auto color detection, crop & deskew, and blank page removal.

# ScanSnap iX100



## Easily synchronize documents to the cloud

iX100 provides users a convenient way to scan directly to your existing Evernote, Dropbox, Google Docs, SugarSync and Salesforce accounts.\*

## Scan there! ScanSnap Folder

Scan to virtually any application or web service that can open, insert or attach a PDF or JPEG file from your Windows® computer.



\*Wi-Fi connection required. Service fees may apply.

## NEW ScanSnap Receipt™

- Organize receipts  
Manage all your receipts in one place
- Extract information  
Easily extract data from receipts
- Efficient tax filing  
Export to CSV



## Organize business cards

Use the included CardMinder software for Mac and PC to scan, store, and edit business card information and export data into applications like Address Book, Excel, and Salesforce.



## New features for quick digitization



### Dual scan

Scan two small sized documents, such as business cards or receipts at the same time. Simply insert documents continuously to reduce your scanning time.

### Automatically stitch together a two-page spread

Even charts and diagrams larger than A4 can be scanned. Just fold it in half, scan both sides and the iX100 will automatically stitch it back together.

## Two selectable paper paths

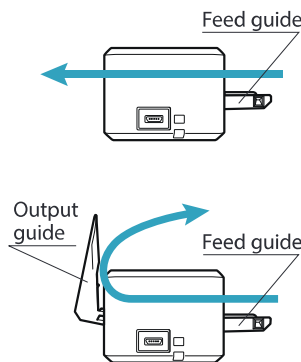
### Straight path

Most suitable for scanning post cards, business cards, plastic cards, and thick stock paper.

\*This applies to standard ISO 7810 ID-1 card types.

### U-turn path

Most suitable for scanning common office paperwork especially in a tight or cluttered environment.



ScanSnap Receipt	ScanSnap Organizer	Scan to CardMinder	Scan to Folder	Scan to E-mail	Scan to Print
Scan to Mobile	Scan to Dropbox	Scan to Evernote (Doc...)	Scan to Evernote (Note)	Scan to Google Docs(TM)	Scan to Salesforce Cha...
Scan to SugarSync	ABBYY Scan to Word	ABBYY Scan to Excel(R)	ABBYY Scan to PowerPoint(R)	Scan to Picture Folder	<i>*Quick Menu for Windows® shown</i>

## Fast and flexible Quick Menu

The Quick Menu for PC and Mac automatically pops up after scanning to provide you a variety of ways to be immediately productive with your scans. It can be customized to display just your favorites, present a recommendation, and even display custom profiles.

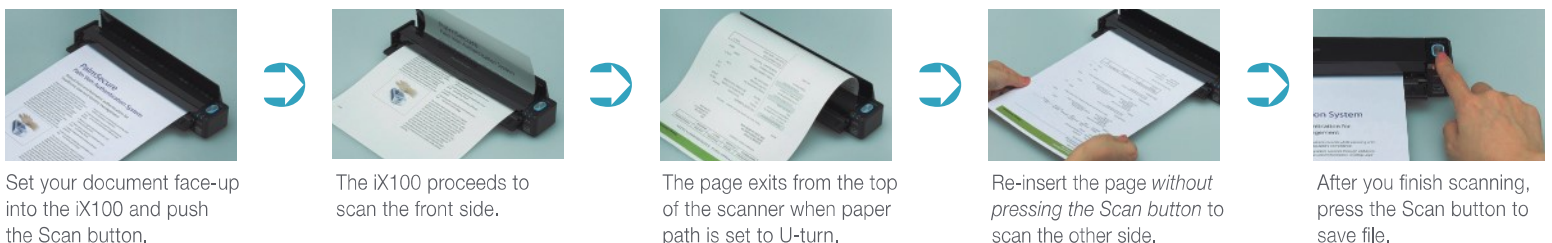
## Generate Microsoft® Word, Excel® and PowerPoint® files

ABBYY FineReader for ScanSnap lets you scan and convert paper documents into Word®, Excel® and PowerPoint® files.

Only Microsoft® Word and Excel® are available for Mac OS.  
Generated images and text may vary from the original.

## Continuous Document Feeding (CDF)

The Continuous Document Feeding function allows you to insert pages one after another by detecting when a sheet enters and exits.



Set your document face-up into the iX100 and push the Scan button.

The iX100 proceeds to scan the front side.

The page exits from the top of the scanner when paper path is set to U-turn.

Re-insert the page *without pressing the Scan button* to scan the other side.

After you finish scanning, press the Scan button to save file.

## General Specifications

Description	ScanSnap iX100 / PA03688-B005	
Scanner type	CDF (Continuous Document Feeding), Simplex sheetfed two-way paper path (Straight path, U-turn path)	
Scanning modes	Color, grayscale, monochrome, automatic (color / grayscale / monochrome detection)	
Image sensor	CIS (Contact Image Sensor) x 1	
Light source	3 Color LED (Red / Green / Blue)	
Optical resolution	600 dpi	
Scanning speed *1 (A4 portrait)	Auto mode (default) *2	5.2 seconds / page
	Normal mode (150 dpi)	
	Better mode (200 dpi)	
	Best mode (300 dpi)	
	Excellent mode (600 dpi)	20.4 seconds / page
Document size *3	Normal mode	A4, A5, A6, B5, B6, Business card, Post card, Letter, Legal and Custom sizes (Max: 216 x 360 mm (8.5 x 14.17 in.), Min: 25.4 x 25.4 mm (1 x 1 in.) / Automatically recognizes document size
	Normal mode with Carrier Sheet	Use of a Carrier Sheet permits the scanning of A3, B4, double letter and photographs as well as the document sizes that are listed above.
	Long paper scanning *4	Max: 216 x 863 mm (8.5 x 34 in.) (300 dpi or less)
Paper weight (Thickness)	<ul style="list-style-type: none"> <li>52.3 to 209.3 g/m<sup>2</sup>, or 14 to 56 lb (Straight path)</li> <li>52.3 to 80 g/m<sup>2</sup>, or 14 to 20 lb (U-turn path)</li> <li>Card: Portrait or Landscape (Straight path) Non-embossed: 0.76 mm or less Embossed: 0.76 + 0.48 mm (ISO7810 Conforming)</li> </ul>	
Paper setting	Front-side up	
Continuous scanning	260 sheets (A4, color, simplex, 300 dpi, battery operated) *5	
Interface *6	USB 2.0 (USB 1.1 compatible)	
Power source	Li-ion Battery (3.7 V / 720 mAh)	
Power requirement	5 V / 0.5 A (x 1port)	
Power consumption *7	During operation: 4.7 W or less During sleep mode: 2.2 W or less During Auto Standby (OFF) mode: Less than 0.5 W	
Operation environment	Temperature: 5 to 35 °C (41 to 95 °F) Relative humidity: 20 to 80% (Non-condensing)	
Dimensions (W x D x H) *8	273 x 47.5 x 36 mm (10.74 x 1.87 x 1.42 in.)	
Device weight	400 g (0.88 lb)	
Environmental compliance	ENERGY STAR® compliant/RoHS/EPEAT® Silver	
Multifeed detection	None	
Driver	ScanSnap specific driver <ul style="list-style-type: none"> <li>Windows®: Does not support TWAIN / ISIS®</li> <li>Mac OS: Does not support TWAIN</li> </ul>	

\*1 Scanning speeds may vary due to the system environment used. Scanning speed measured from "start feeding document" to "finish output document" after pre-pick and pressing scan button (not including warm-up time). Warm-up time is less than 2 seconds (or less than 3 seconds from chute cover closed). \*2 Documents measuring approximately 148 mm in length or less are scanned in "Best mode", while other documents are scanned in "Better mode". \*3 Automatically stitch a two-page spread when scanning a folded A3, B4 or double letter size document one side at a time. The image is automatically stitched only if text or diagrams cover across the two-page spread. \*4 The iX100 is capable of scanning documents that exceed A4 size in length. This function is available for all modes except for "Excellent mode". \*5 The number of sheets that can be scanned when connected to a computer via Wi-Fi with a fully charged battery. The number of sheets may vary due to the system environment used, usage method and repeated charging. \*6 Computer with USB 3.0 will work as USB 2.0 guaranteed only with USB cable provided with product. \*7 When operating with battery. \*8 When chute is closed.

## Software

	Windows®	Mac OS
Driver *1	ScanSnap Manager V6.3 (TWAIN / ISIS™ not supported)	ScanSnap Manager V6.3 (TWAIN not supported)
Applications	ScanSnap Organizer V5.2	ScanSnap Organizer V1.1
	ScanSnap Receipt V1.0	ScanSnap Receipt V1.0
	CardMinder™ V5.2	CardMinder™ V5.2
	ABBYY FineReader for ScanSnap™ 5.0	ABBYY FineReader for ScanSnap™ 5.0
	Scan to Microsoft® SharePoint® 3.4	-

\*1 TWAIN or ISIS™ applications cannot be used directly.

## Included items

<ul style="list-style-type: none"> <li>Getting started</li> <li>Set-up DVD-ROM</li> <li>USB cable 50cm (0.5m)</li> </ul>
--

This scanner is designed to digitize materials that can be reproduced lawfully, in accordance with applicable copyright regulations and other laws. ScanSnap users are responsible for how they use this scanner. It is imperative that ScanSnap users comply with all applicable local rules and laws, including, without limitation, copyright laws when using this scanner.

©2014 Fujitsu Computer Products of America, Inc. All rights reserved. Fujitsu and the Fujitsu logo are registered trademarks of Fujitsu Limited. \*ABBYY and FineReader are trademarks of ABBYY Software, Ltd. which may be registered in some jurisdictions. ABBYY™ FineReader™ Engine ©2011 ABBYY, OCR by ABBYY. \*Evernote is a registered trademark or trademark of Evernote Corporation. \*Google and Google Docs are registered trademarks or trademarks of Google Inc. \*Intel, Pentium, and Intel Core are trademarks or registered trademarks of Intel Corporation in the United States and/or other countries. \*ISIS® is a registered trademark of EMC Corporation in the United States. \*Mac, Mac OS, Mac logo and iPhoto are trademarks of Apple Inc. \*Microsoft, Windows, Windows Vista, Excel, PowerPoint and SharePoint are either registered trademarks or trademarks of Microsoft Corporation in the United States and/or other countries. \*Word is the products of Microsoft Corporation in the United States. \*PowerPC is a registered trademark or trademark of International Business Machines Corporation in the United States, other countries, or both. \*Salesforce and Salesforce CRM are registered trademarks or trademarks of salesforce.com, inc. in the United States and other countries. \*ScanSnap, ScanSnap logo, ScanSnap Manager, ScanSnap Organizer and CardMinder are registered trademarks or trademarks of PFI LIMITED in Japan. \*Other company names and product names are the trademarks or registered trademarks of the respective companies. Specifications are subject to change without notice. All statements herein are valid in the US for US residents only, are based on normal operating conditions, are for informational purposes only, and are not intended to create any implied warranty of merchantability or fitness for a particular purpose. DS405000701

For more ScanSnap related information, visit our Web site at : <http://scansnap.fujitsu.com/>

<b>⚠ Safety Precautions</b>	Be sure to carefully read all safety precautions prior to using this product and use this device as instructed.	Do not place this device in wet, moist, steamy, dusty or oily areas. Using this product under such conditions may result in electrical shock, fire or damage to this product.
-----------------------------	---	---

## Fujitsu Computer Products of America, Inc.

1250 East Arques Avenue, Sunnyvale, CA 94085-4701

Tech Support: (800) 626-4686, Sales: (888)425-8228 • [info@fcpa.fujitsu.com](mailto:info@fcpa.fujitsu.com) • <http://us.fujitsu.com/fcpa>

## ScanSnap iX100 System Requirements

### Windows®

Compatible operating systems		Windows® 8 / 8.1 (32-bit / 64-bit)	Windows® 7 (32-bit / 64-bit) *1	Windows Vista® (32-bit / 64-bit) *2
Driver / Applications *3	ScanSnap Manager V6.3	Supported	Supported	Supported
	ScanSnap Organizer V5.2	Supported	Supported	Supported
	ScanSnap Receipt V1.0	Supported	Supported	Supported
	CardMinder™ V5.2	Supported	Supported	Supported
	ABBYY FineReader for ScanSnap™ 5.0	Supported	Supported	Supported
	Scan to Microsoft SharePoint 3.4	Supported	Supported	Supported
Hardware requirements *4	CPU *5	Intel® Core™ i5 2.5 GHz or higher		
	Memory capacity *5	4 GB or more		
	Display	1,024 x 768 pixels or higher	800 x 600 pixels or higher	
	Disk capacity *6	2,690 MB or more of free hard disk space		
	DVD-ROM drive	Required for installation		
	USB port *5 *7	USB 2.0 / USB 1.1		

\*1 Service Pack 1 or later required. \*2 Service Pack 2 or later required. \*3 Operating systems listed in this table are the only ones supported. Please refer to the ScanSnap Web site for latest support information. \*4 The ScanSnap device may not work if the connected computer does not meet this requirement. \*5 Scanning speeds may drop if recommended CPU, memory capacity and USB 1.1 requirements are not met. \*6 Microsoft .NET Framework 3.5 SP1 will be installed (requires 500 MB of disk space) together with either ScanSnap Manager or ScanSnap Organizer for systems that do not have .NET Framework 3.5 SP1 installed. \*7 When the ScanSnap is connected to a USB 3.0 port, the port operates as a USB 2.0 port. \*8 System requirements may change depending on the duration of support and the support policy of the companies that make the software listed in the table above.

### Mac OS

Compatible operating systems		OS X v10.9 *1	OS X v10.8 *2	Mac OS X v10.7 *3
Driver / Applications *4	ScanSnap Manager V6.3	Supported	Supported	Supported
	ScanSnap Organizer V1.1	Supported	Supported	Supported
	ScanSnap Receipt V1.0	Supported	Supported	Supported
	CardMinder™ V5.2	Supported	Supported	Supported
	ABBYY FineReader for ScanSnap™ 5.0	Supported	Supported	Supported
Hardware requirements *5	CPU *6	Intel® Core™ i5 2.5 GHz or higher		
	Memory capacity *6	4 GB or more		
	Display	1,024 x 768 pixels or higher		
	Disk capacity	1,930 MB or more of free hard disk space		
	DVD-ROM drive	Required for installation		
	USB port *6 *7	USB 2.0 / USB 1.1		

\*1 OS X v10.9.1 or later recommended. \*2 OS X v10.8.5 recommended. \*3 Mac OS X v10.7.5 recommended. \*4 Operating systems listed in this table are the only ones supported. Please refer to the ScanSnap Web site for latest support information. \*5 The ScanSnap device may not work if the connected computer does not meet this requirement. \*6 Scanning speeds may drop if recommended CPU, memory capacity and USB 1.1 requirements are not met. \*7 When the ScanSnap is connected to a USB 3.0 port, the port operates as a USB 2.0 port. \*8 System requirements may change depending on the duration of support and the support policy of the companies that make the software listed in the table above.

## Options

Description	Part number	Remarks
AC adapter	PA03010-6571 USA, Canada & Taiwan	Intended for ScanSnap iX100
ScanSnap iX100 Case *1	PA03688-0001	Intended for ScanSnap iX100
ScanSnap iX100 Soft Case *1	PA03688-0011	
ScanSnap Carrier Sheets *2	PA03360-0013	5 Carrier Sheets Intended for ScanSnap iX500, iX100, S1500, S1500M, S1100i, S1100

\*1 This product has been especially designed for storing and carrying ScanSnap iX100. Please note that this product is not guaranteed to withstand damage by excessive shock or external pressure. \*2 Although ScanSnap Carrier Sheets have a listed lifespan of 500 scans, the lifespan may vary with usage. ScanSnap Carrier sheets are intended to scan paper documents with weights of 127 g/m<sup>2</sup> or less. They also support the scanning of folded documents that are as large as 216 x 297 mm.

## Consumables

Description	Part number	Remarks
Cleaner F1	PA03950-0352	100 ml bottle Used to clean rollers
Cleaning Wipe	PA03950-0419	1 pack (24 sheets) Used to clean rollers

**POWERED BY**



**ABBYY FineReader**

ABBYY™ FineReader™ Engine ©2011 ABBYY, OCR by ABBYY  
ABBYY and FineReader are trademarks of ABBYY.



This product is a green product and Fujitsu promotes recycling for the scanner. PFI LIMITED, a Fujitsu company, has determined that this product meets the ENERGY STAR® guidelines for energy efficiency. ENERGY STAR® is a registered trademark of the United States.

